

PRESS RELEASE

Aachen, den 26.02.2019

Werkzeugmaschinenlabor WZL der
RWTH Aachen University

Viktoria Ingelmann
Leitung Presse & Öffentlichkeit

Campus-Boulevard 30
52074 Aachen
GERMANY

Telefon: +49 241 80-27554
Telefax: +49 241 80-22293
v.ingelmann@wzl.rwth-aachen.de
www.wzl.rwth-aachen.de

Next Level Production Networks

Second Expert forum „Global Production“

How can production networks be designed for the future through Industry 4.0 and what potentials are there? This problem and other central challenges associated with the design of global production networks will be discussed at the second expert forum "Global Production". In addition to top-flight experts from industry, Prof. Lanza from KIT Karlsruhe, Prof. Friedli from the University of St. Gallen and Prof. Schuh from the Laboratory for Machine Tools and Production Engineering (WZL) of RWTH Aachen University will chair the forum.

After the first expert forum in 2016 with over 60 participants, which received a very positive response, the future participants will be given an even more intensive insight into the coming trends and success factors of the future-oriented design of production networks through impulse lectures and discussions on 4 October 2018 in Stuttgart. Lectures by high-ranking industry representatives complement the event and deepen the insight through best-practice examples and the teaching of relevant methods.

Interested parties are cordially invited to use the expert forum as an exchange of experience and knowledge to critically examine their production network, identify potentials and inform themselves about current trends in the global production environment.

All further information on participation in the second expert forum "Global Production" to be found on www.globaleproduktion.de.

Laboratory for Machine Tools and Production Engineering (WZL)

The Laboratory for Machine Tools and Production Engineering (WZL) of RWTH Aachen University has stood worldwide for more than 100 years for future-oriented research and successful innovations in the field of production technology.

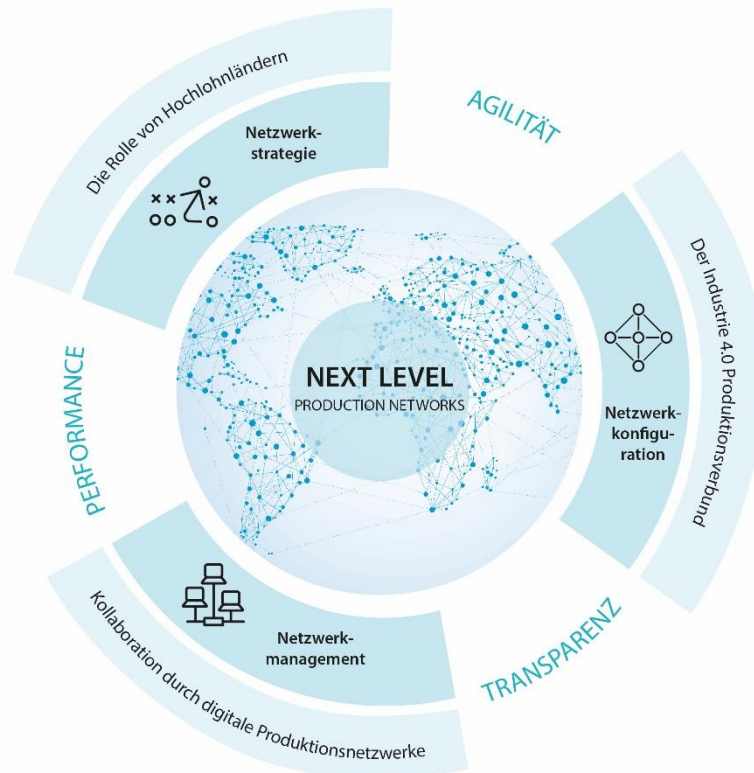
Under the leadership of four professors Christian Brecher, Fritz Klocke, Robert Schmitt und Günther Schuh, the WZL is conducting research in six areas - production technology, machine tools, production systems, transmission technology, production metrology and quality management - on the future-oriented design of production in high-wage countries. Together with industry partners from various sectors, the WZL develops solutions for a wide variety of production scenarios in both publicly funded and bilateral projects. These activities are being consolidated on the RWTH Aachen Campus in the Cluster Production Engineering.

www.wzl.rwth-aachen.de

PRESS RELEASE

Aachen, den 26.02.2019

Attachment



Focus at second Expert forum Global Production

Contact

Katharina Thomas, M.Sc. RWTH
+49 241 80-23619
k.thomas@wzl.rwth-aachen.de